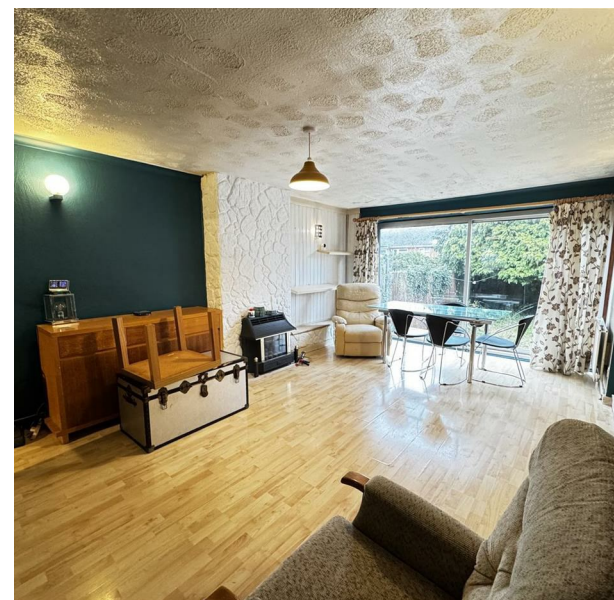
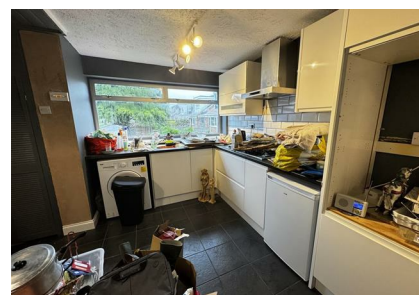
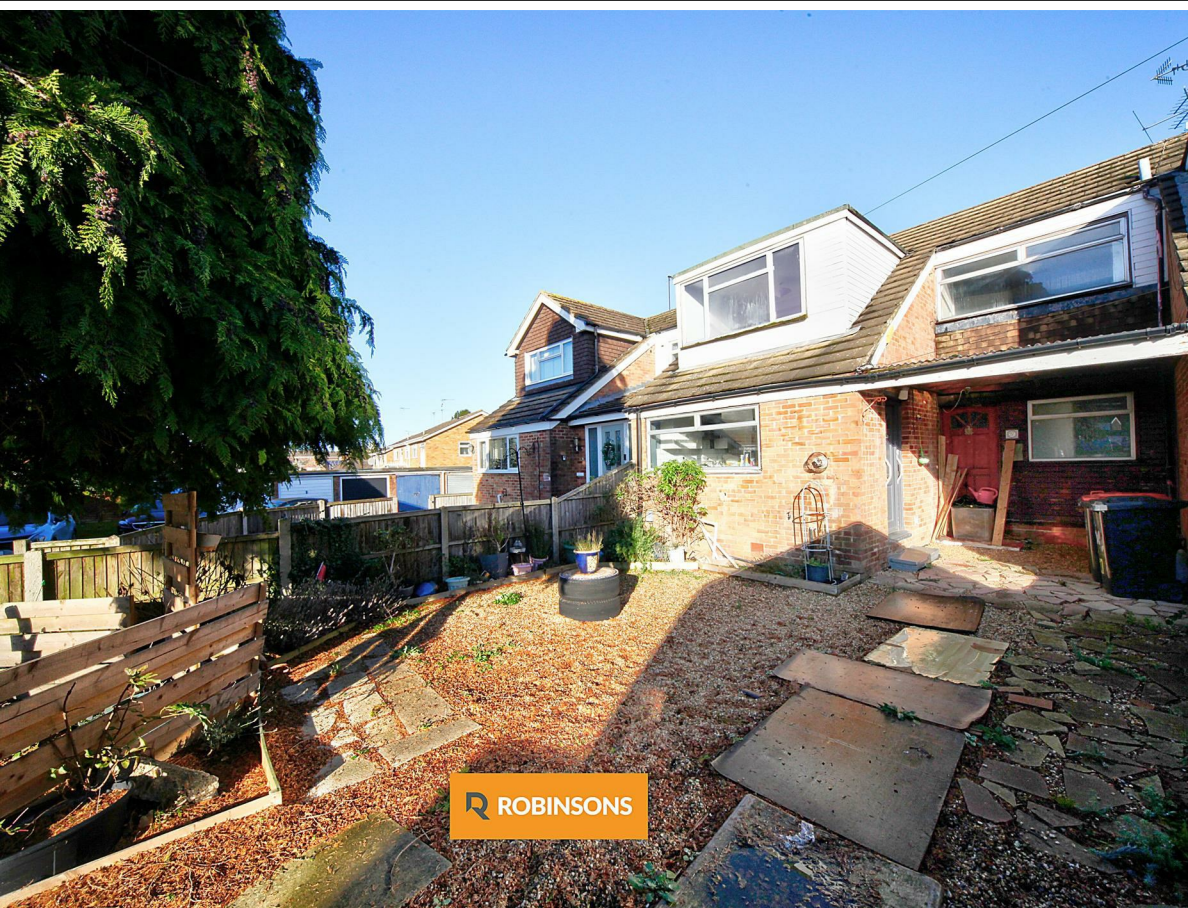


27 Churchill Road, Dunstable, LU6 3LU
Open To Offers £330,000

ROBINSONS



STUNNING EXTENDED THREE-BEDROOM FAMILY HOME IN THE HEART OF DUNSTABLE — OFFERED WITH NO ONWARD CHAIN.

Step inside this spacious and well-designed three-bedroom home, offering a fantastic layout across two floors. The ground floor welcomes you with a generous living area that flows seamlessly into a dedicated dining space, perfect for entertaining or family meals. The kitchen is impressively sized, ideal for keen cooks and busy households alike, while the downstairs bathroom adds convenience and practicality.

Upstairs, you'll find three bedrooms, each with its own character. The principal bedroom is bright and inviting, while the second bedroom stretches the full depth of the house — a dream for anyone needing extra space. The third bedroom is perfectly suited for a child, guest room, or home office. A central staircase and airing cupboard complete the upper level, with thoughtful design throughout.

This home offers over 1,200 square feet of living space, with a layout that maximises comfort and functionality. Whether you're upsizing, relocating, or simply looking for a place to call your own, this property ticks all the boxes.



Total Area: 112.8 m² ... 1215 ft²

Floorplan produced by Woodside Photography
Floorplan is for illustration purposes only and all measurements are approximate



20 West Street
Dunstable
Bedfordshire
LU6 1SX
01582 661112
sales@robinsons-estates.co.uk
<https://www.robinsons-estates.co.uk>



Energy Efficiency Rating		
	Current	Potential
Very energy efficient - lower running costs		
(92 plus) A		
(81-91) B		
(69-80) C		
(55-68) D		
(39-54) E		
(21-38) F		
(1-20) G		
Not energy efficient - higher running costs		
England & Wales	EU Directive 2002/91/EC	